

20

ORIGINAL DRIVEWAY
WELL LOOKED-AFTER TERRACE
BEAUTIFUL GARDEN



CERRAD

TABLE OF CONTENTS

MEET CERRAD 2.0 4

INSPIRATIONS 6

COLLECTIONS

ARRAGOS	74
BELGICA	76
CLIFF	78
CRAFTER	80
LUKKA	82
MONTEGO	84
RAGAYA	88
STRATIC	90
TAURO	92
TESTO	94
VERNESS	96

PROPERTIES 97

TABLES 98



DESIGN

IN FULL COMPLETION

A well looked-after terrace, a beautiful garden and an original driveway are all hallmarks of every house. These areas require the finest, highly aesthetic materials with proper technical parameters.

To accommodate those who dream of coherent, yet durable design arrangements around their house, we present to you the new porcelain collections of 20 mm thick, full body colour and stained tiles.

The new items in the Lukka and Montego collections are stress resistant, have low water absorption and high anti-slip properties. They are a perfect solution for terraces, garden paths, arbours, driveways or even exterior stairs. They can be installed directly on the ground – on grass, gravel, sand or special pedestals, which opens unlimited possibilities for designers.

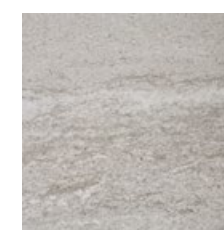
Also if we decide to go with other, standard thickness products found in these collections, we can easily match tiles used in the interior and exterior of the house, creating a trendy "total look" design.

The design of your dreams is now at your reach!

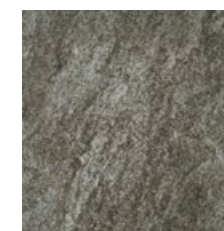
Arragos 2.0



Arragos 2.0 AG12 grey 60×60 | **Arragos 2.0** AG14 anthracite 60×60



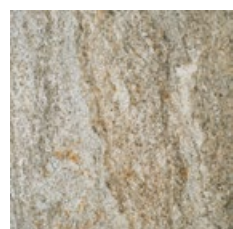
AG12
/ grey



AG14
/ anthracite

Faithfully imitating natural stone, tiles from the Arragos collection are the most durable and practical solution that will perform ideally in the garden in summer, and winter alike

Arragos 2.0 AG04 brown 60×60



AG04
/ brown



A beautiful tile pattern will emphasize the natural feel and bring harmony to the modern design around the building.

Collection

Arragos 2.0



Collection

Arragos 2.0



Arragos 2.0 AG12 grey 60×60 | Arragos 2.0 AG13 dark grey 60×60

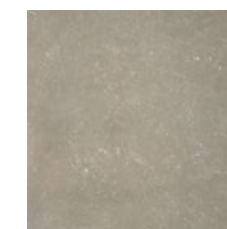
AG12
/ greyAG13
/ dark grey

Using two shades of gres tiles will accentuate the modernity and minimalism of the space around the house.

Belgica 2.0



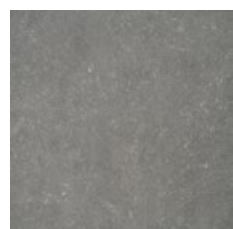
Belgica 2.0 grey 60x60



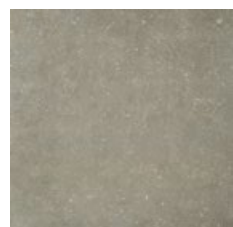
grey

Tiles 2.0 have a great load bearing capacity. They will work perfectly as a terrace floor, a garden path, or a garage entrance.

Belgica 2.0 black 60x60 | **Belgica 2.0** blue 60x60



black



blue

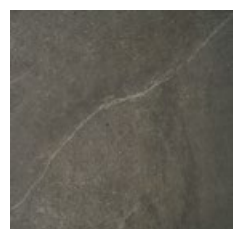
Tiles from the Belgica 2.0 collection are both practical and stylish. These modern tiles present themselves ideally among minimalistic accents and geometric motifs that are characteristic in contemporary construction.



Collection

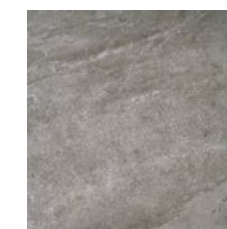
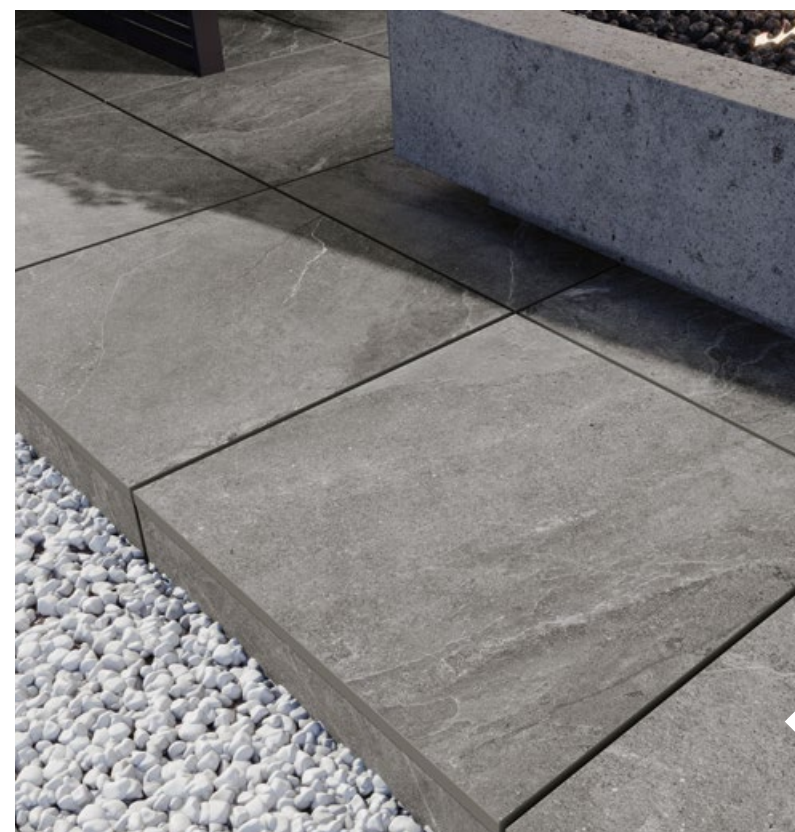
Belgica 2.0



Cliff 2.0 CF14 anthracite 60×60

 CF14
/ anthracite


Stone-inspired tiles in four colors are a universal way to emphasize the building's architecture and add some character to terraces and garden paths.

Collection
Cliff 2.0

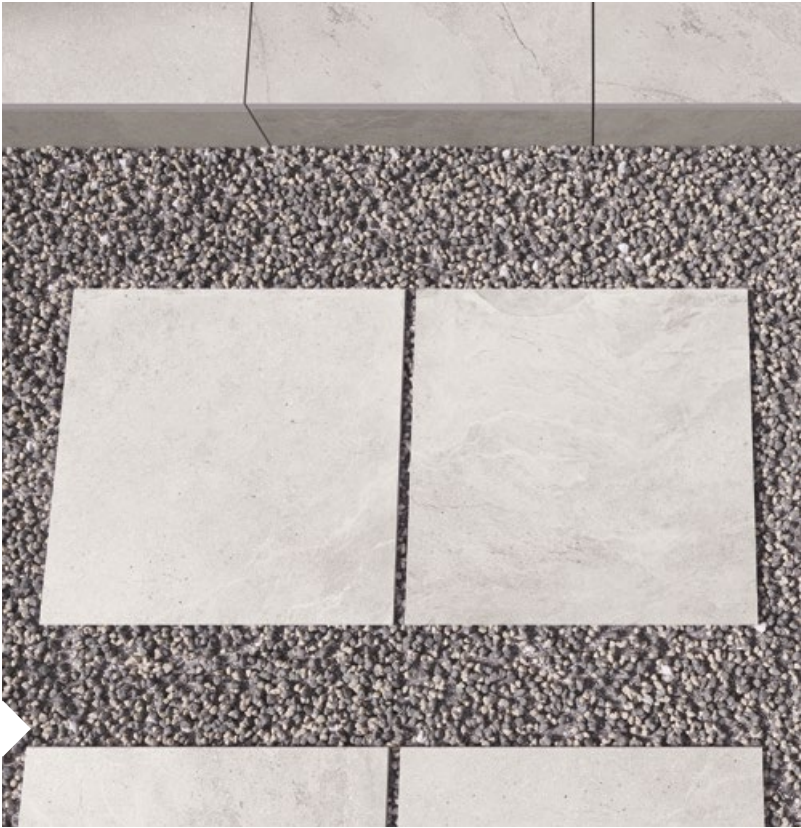

**Cliff 2.0** CF12 grey 60x60CF12
/ grey

It's worth using solutions that complement one another in order to create a coherent design on a terrace and in the garden space. Tiles from the 2.0 collection can be used, among other spaces, on ventilated terraces.

Cliff 2.0 CF10 light grey 60x60



CF10
/ light grey



Tiles 2.0 give us almost unlimited compositional possibilities – we can lay them directly on the ground: grass, gravel sand, or on special mounting pads.

Collection

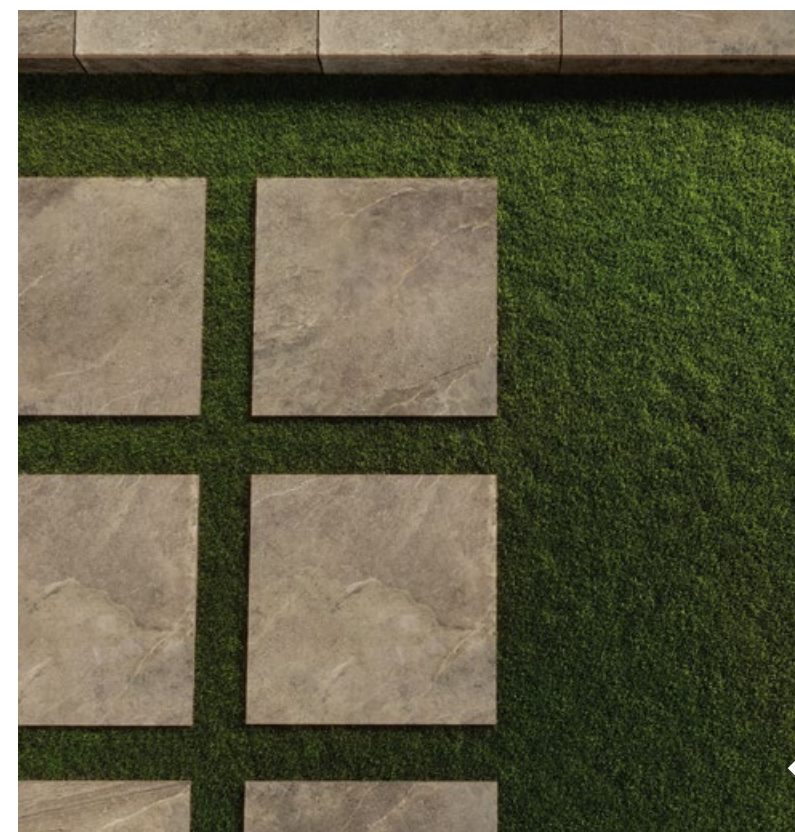
Cliff 2.0



Cliff 2.0



Cliff 2.0 CF05 dark brown 60×60

CF05
/ dark brown

Design taken from the natural world makes the Cliff collection tiles a perfect backdrop for the lush greenery of a garden.

Crafter 2.0



Crafter 2.0 silver 60x120



silver

Tiles from the Crafter collection were designed for those who value impeccable aesthetics, while at the same time requiring the highest technical parameters.

Crafter 2.0 grafit 60x120

grafit



A natural color palette, from dark nero, to the lighter shade of silver and gris, provides unlimited design possibilities.

Collection

Crafter 2.0

Crafter 2.0

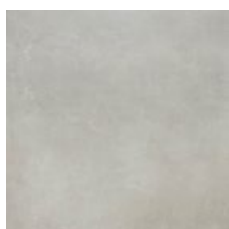


Crafter 2.0 nero 60x120



nero

Crafter tiles in the shade of nero will prove themselves literally in any design. Gray tiles perfectly match both warm, and cold colors.

Lukka 1.8 gris 80×80


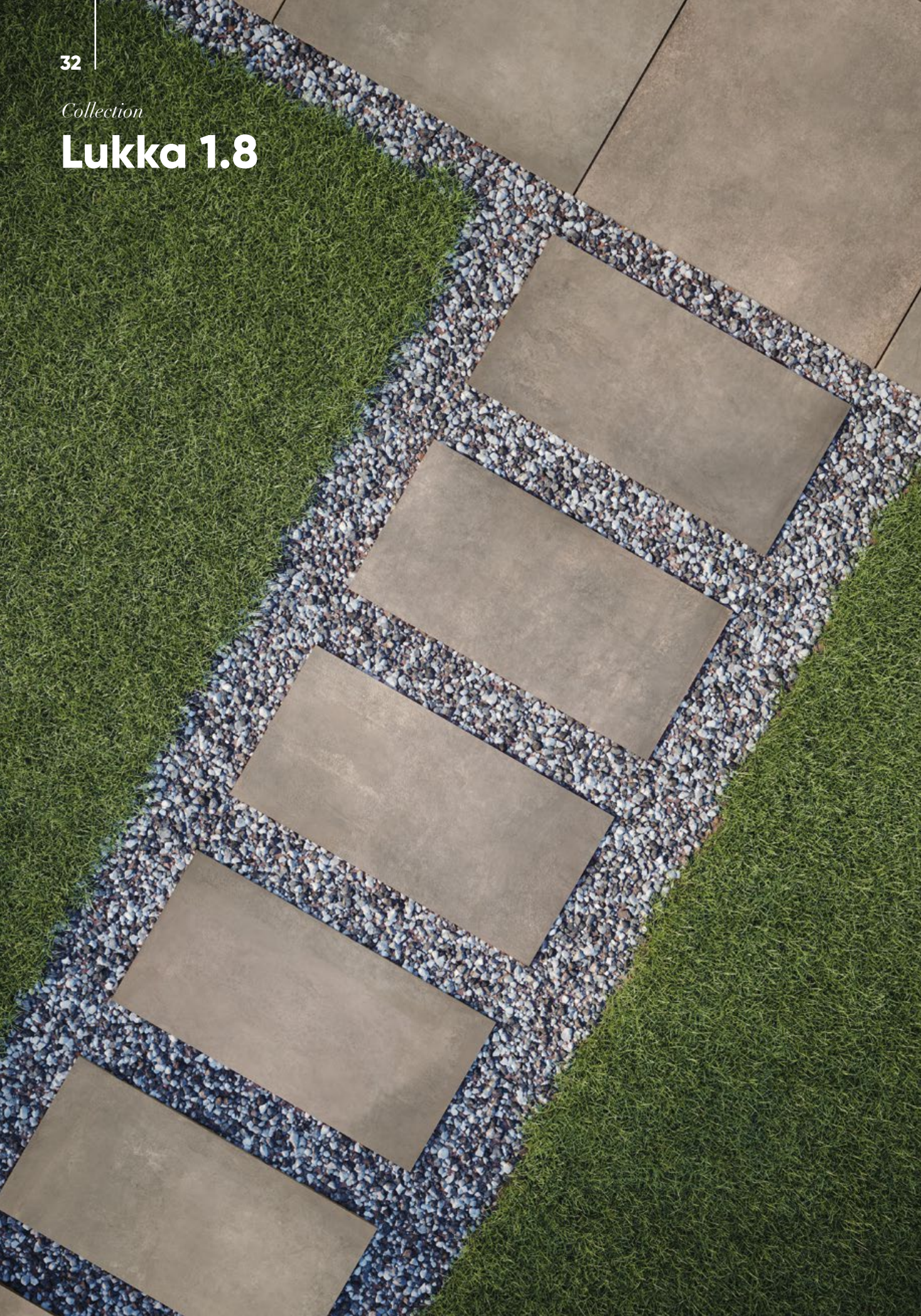
gris



The Lukka collection is a universal companion for facades in subdued gray, graphite or timeless white colors.

Collection
Lukka 1.8


Lukka 1.8

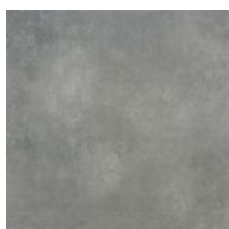


Lukka 1.8 dust 80×80 | **Lukka 1.8** dust 40×80



dust

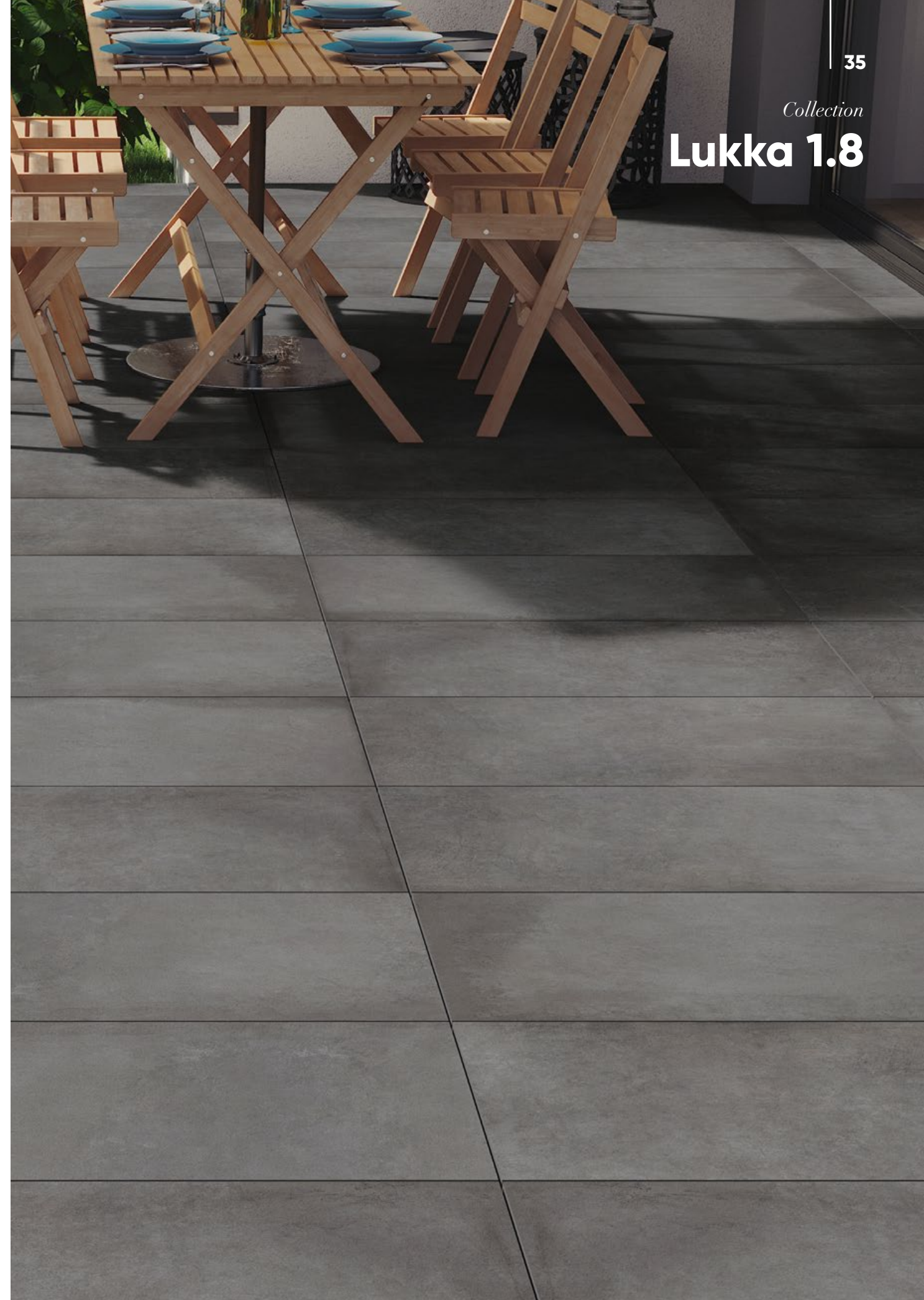
A surface covered with tiles in a lovely shade of dust will give off a warm and natural feel, which makes them ideally suited for Scandinavian, classic or eclectic terrace designs.

Lukka 1.8 grafit 80×80


grafit



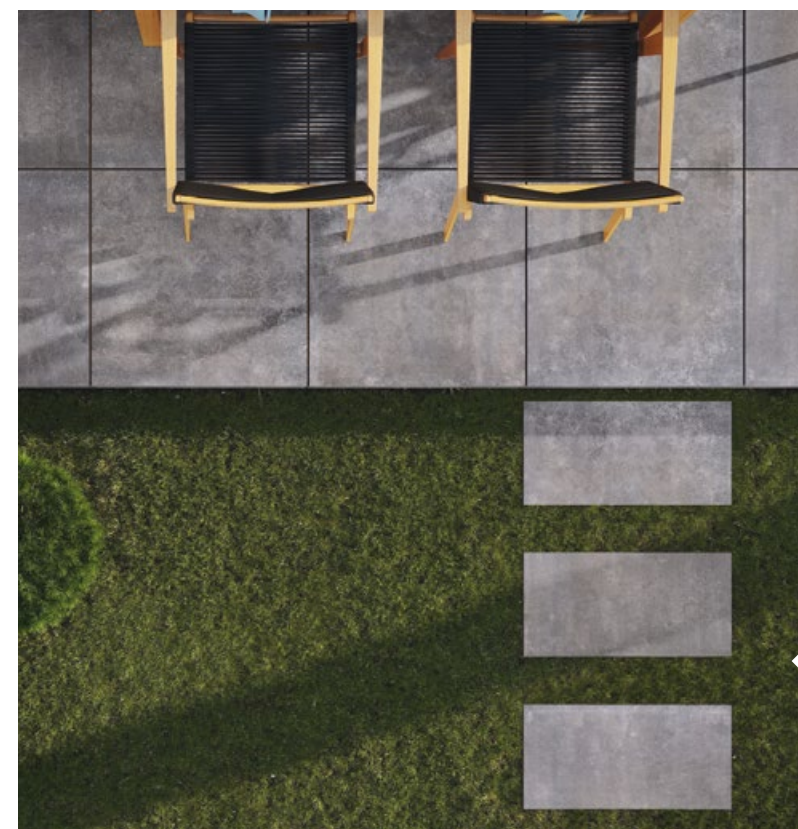
The collection fits perfectly into trends that focus on spaces being designed in accordance with a more modernistic direction. The tiles are perfect for public spaces.

Collection
Lukka 1.8


Montego 2.0

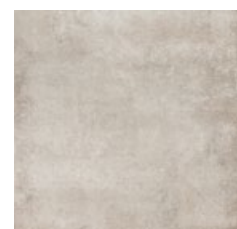


Montego antracyt 80×80 | **Montego** antracyt 40×80



antracyt

Montego tiles perfectly imitate concrete surfaces, which makes them a universal solution for creating modern stylizations. Using the same collection, which is also available in standard thicknesses, we can easily create a design that's coherent with the aesthetics inside the house.



desert



The Montego collection is a universal companion for facades in subdued gray, graphite or timeless white colors.

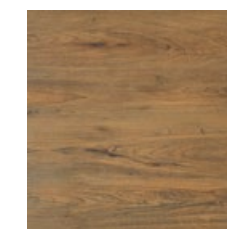
Montego 2.0



Ragaya 2.0

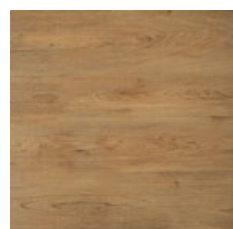


Ragaya 2.0 RG04 brown 60x60



RG04
/ brown

The Ragaya collection is a perfect alternative to tiles in shades of gray as it combines the warmth and elegance of wood, with the durability and functionality of stoneware.

Ragaya 2.0 RG03 beige 60x60

 RG03
/ beige


A wooden pattern is timeless and it fits many styles, thanks to which we can be sure that the arranged space of the garden and terrace will look perfect for years.

Collection
Ragaya 2.0

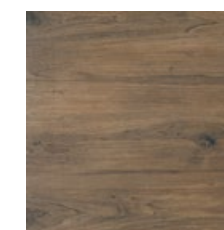

Ragaya 2.0



Ragaya 2.0 RG02 cream 60×60 | **Ragaya 2.0** RG05 dark brown 60×60

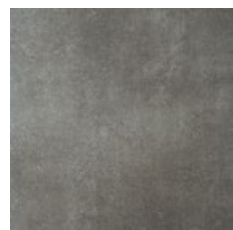


RG02
/ cream



RG05
/ dark brown

Properly arranged pathways can completely change the appearance of a property by adding character and emphasizing its advantages. Combining several colors from the Ragaya collection will be a perfect solution.

Stratic 2.0 ST13 dark grey 60×60

ST13
/ dark grey



The smooth surface and natural color palette of the Stratic collection will emphasize the minimalistic, yet effective design, that is inspired by the raw nature of concrete.

Collection
Stratic 2.0



Stratic 2.0



Stratic 2.0 ST10 light grey 60×60



ST10
/ light grey

Stratic tiles perfectly imitate concrete surfaces, which makes them a universal solution for creating modern stylizations.

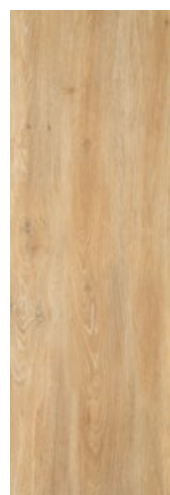
Stratic 2.0



Stratic 2.0 ST14 anthracite 60×60

ST14
/ anthracite

The darker version of concrete tiles is an excellent alternative for people looking for neutral solutions. In terms of design, they are simple and elegant, contributing to the creation of a coherent and uniform design, which in turn provides the perfect background for greenery.

Tauro 2.0 sabbia 40x120

sabbia



Wood-like tiles from the Tauro collection are perfect as a cladding for garden pathways and recreational spaces in the garden.

*Collection***Tauro 2.0**

Tauro 2.0



Tauro 2.0 brown 40x120

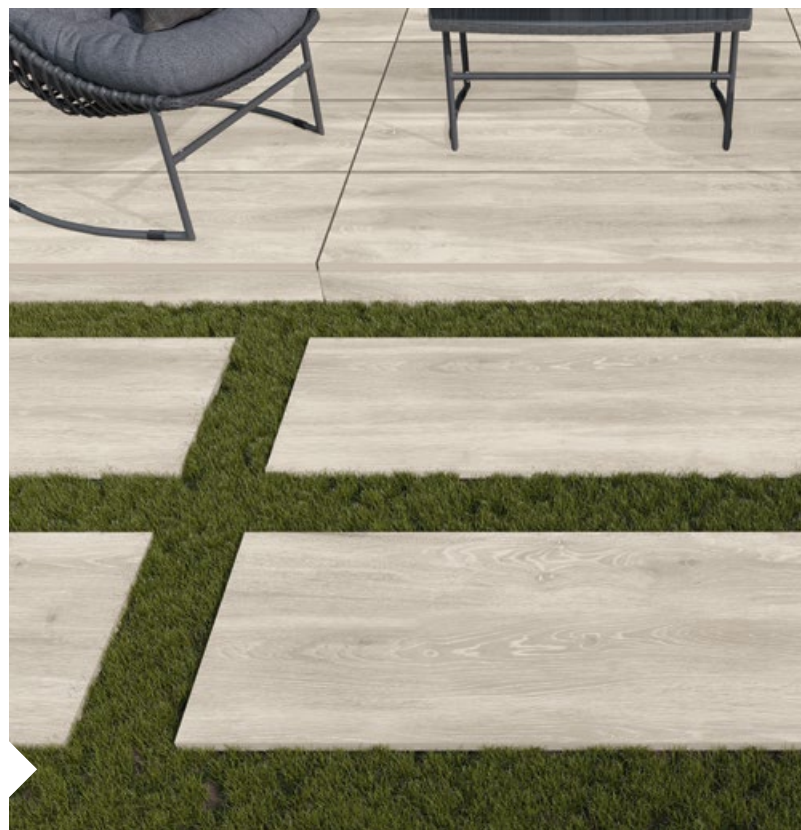


brown

Thanks to their rich colors, tiles from the Tauro collection harmonize with minimalistic and modern designs.

Tauro 2.0 bianco 40×120

bianco



The simple form and beautiful colors of the tiles in the collection makes them perfect for geometrically arranged pathways.

*Collection***Tauro 2.0**

Tauro 2.0



Tauro 2.0 ochra 40x120



ochra

Wood-like tiles from the Tauro collection are a perfect finishing element that completes the design and gives it a cozy atmosphere.

Tauro 2.0 honey 40x120



honey



Wood-like panels in warm honey shades from the Tauro collection are an extremely fashionable, functional and aesthetic alternative to natural wood. The tiles will warm up the designed space and make it feel cozier.

Collection

Tauro 2.0



Testo 2.0 silver 60x120

silver



The universal nature of the Testo collection tiles allows you to create unusual compositions using, among others, gravel and vegetation as part of them.

*Collection***Testo 2.0**

Testo 2.0



Testo 2.0 greige 60×120



greige

The light shade of greige tiles from the Testo collection will help to harmonize the garden décor by blending in with the green space around them.

Testo 2.0 grafit 60x120

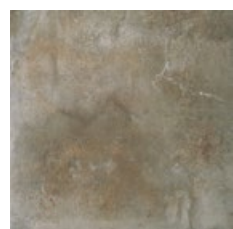
grafit



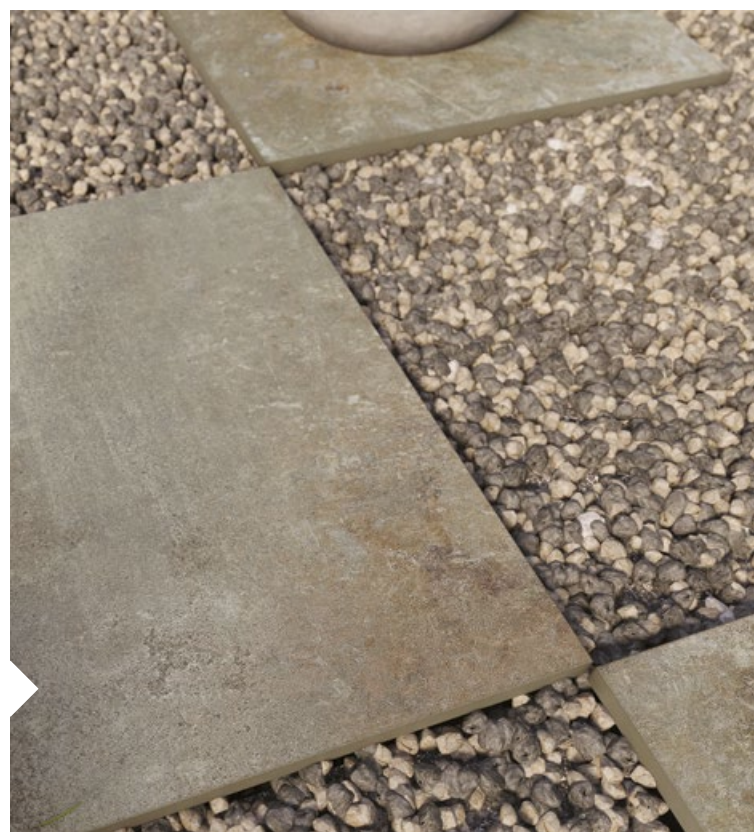
Concrete is an inseparable element of the industrial style, and it's great at emphasizing the charm of minimalist designs, where among the simplicity, it actually becomes a characteristic decoration.

Collection

Testo 2.0

Verness 2.0 VS04 brown 60×60

 VS04
/ brown

Porcelain tiles imitating stone from the Verness collection are not only visually pleasing to look at, but they are also functional as they don't require impregnation, it's easy to install and it has maximum resistance to the ever-changing weather conditions.


Collection
Verness 2.0


Verness 2.0

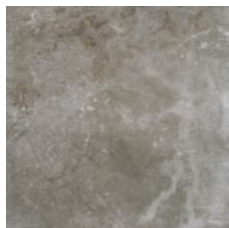


Verness 2.0 VS12 grey 60x60



VS12
/ grey

Thanks to the Verness collection, you can create a space that is coherent in terms of design – matching the character of the building and the garden.

Verness 2.0 VS13 dark grey 60×60


VS13
/ dark grey



Natural shades of tiles imitating stone will skillfully blend into the landscape, remaining a neutral basis for any design.

Collection

Verness 2.0


Arragos 2.0

AG12 grey

R11 (A+B+C) | PEI ●●●●●

59,7×59,7



5900423052363

2
 12

AG13 dark grey

R11 (A+B+C) | PEI ●●●●○

59,7×59,7



5900423052394

2
 12

- tile thickness R11 - non-slip qualities 12 - number of graphic patterns

AG04 brown

R11 (A+B+C) | PEI ●●●●●

59,7×59,7



5900423052332

2
 12

AG14 anthracite

R11 (A+B+C) | PEI ●●●●○

59,7×59,7



5900423052424

2
 12

Packaging

size [cm]	59,7×59,7×2
pieces in the box	2
m² in the box	0,71
box weight [kg]	32,3
m² on a pallet	22,72

Belgica 2.0

black

R11 (A+B+C) | PEI ●●●●○

59,7×59,7



2
 15

5903313304986

grey

R11 (A+B+C) | PEI ●●●●○

59,7×59,7



2
 15

5903313304962

- tile thickness R11 - non-slip qualities 12 - number of graphic patterns

blue

R11 (A+B+C) | PEI ●●●●○

59,7×59,7



2
 15

5903313304948

Packaging

size [cm]	59,7×59,7×2
pieces in the box	2
m² in the box	0,71
box weight [kg]	32,3
m² on a pallet	22,72

Cliff 2.0

CF10 light grey

R11 (A+B+C) | PEI ●●●●●

59,7×59,7



5900423051946

2
 12

CF12 grey

R11 (A+B+C) | PEI ●●●●●

59,7×59,7



5900423051977

2
 12

- tile thickness R11 - non-slip qualities 12 - number of graphic patterns

CF05 dark brown

R11 (A+B+C) | PEI ●●●●○

59,7×59,7



5900423052035

2
 12

CF14 anthracite

R11 (A+B+C) | PEI ●●●●○

59,7×59,7



5900423052004

2
 12

Packaging

size [cm]	59,7×59,7×2
pieces in the box	2
m² in the box	0,71
box weight [kg]	32,3
m² on a pallet	22,72

Crafter 2.0

silver

R11 (A+B+C) | PEI ●●●●○

59,7×119,7



5903313325219

2
 9

gris

R11 (A+B+C) | PEI ●●●●○

59,7×119,7



5903313325233

2
 9

- tile thickness R11 - non-slip qualities 12 - number of graphic patterns

grafit

R11 (A+B+C) | PEI ●●●●○

59,7×119,7



5903313325257

2
 9

nero

R11 (A+B+C) | PEI ●●●●○

59,7×119,7



5903313325271


2
 9

Packaging

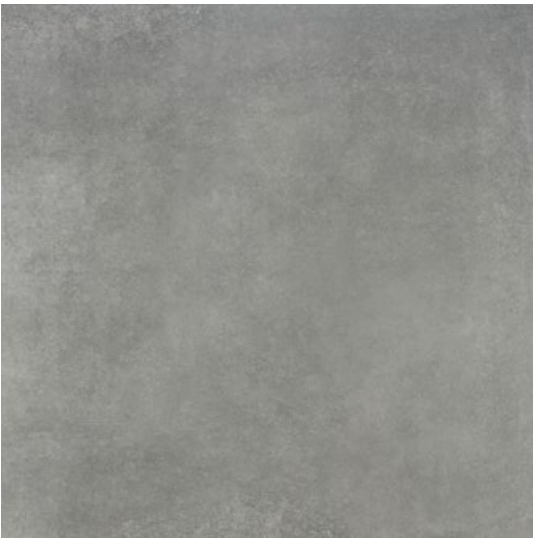
size [cm]	59,7×119,7×2
pieces in the box	1
m² in the box	0,71
box weight [kg]	33,4
m² on a pallet	21,3

Lukka 1.8

grafit

 R11 (A+B+C) | PEI ●●●●○

79,7×79,7



5903313301732

39,7×79,7




5903313301916

 1,8
 10


 1,8
 20


gris

 R11 (A+B+C) | PEI ●●●●●

79,7×79,7




5903313301695


39,7×79,7




5903313301879

 1,8
 10

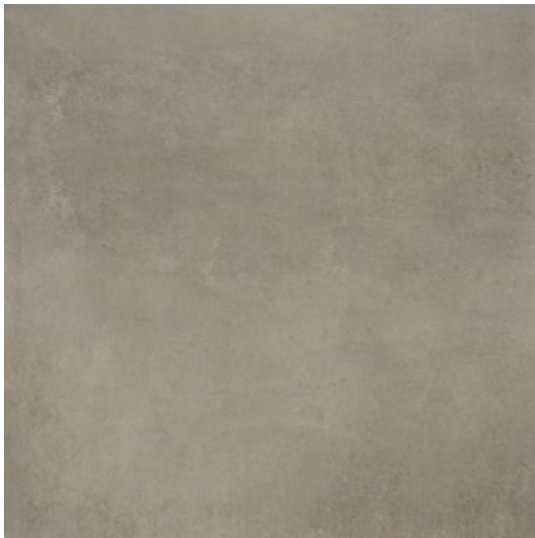

 1,8
 20


 - tile thickness  R11 - non-slip qualities  12 - number of graphic patterns

dust

 R11 (A+B+C) | PEI ●●●●○

79,7×79,7



5903313301718

39,7×79,7




5903313301893

 1,8
 10


 1,8
 20


bianco

 R11 (A+B+C) | PEI ●●●●●

79,7×79,7






5903313301671

39,7×79,7



5903313301855

 1,8
 10


 1,8
 20


Packaging

size [cm]	79,7×79,7×1,8	39,7×79,7×1,8
pieces in the box	1	2
m² in the box	0,64	0,63
box weight [kg]	27,2	26,78
m² on a pallet	25,6	26,46

Montego 2.0

desert

R11 (A+B+C) | PEI ●●●●●

79,7×79,7



5903313301770

39,7×79,7



5903313301954

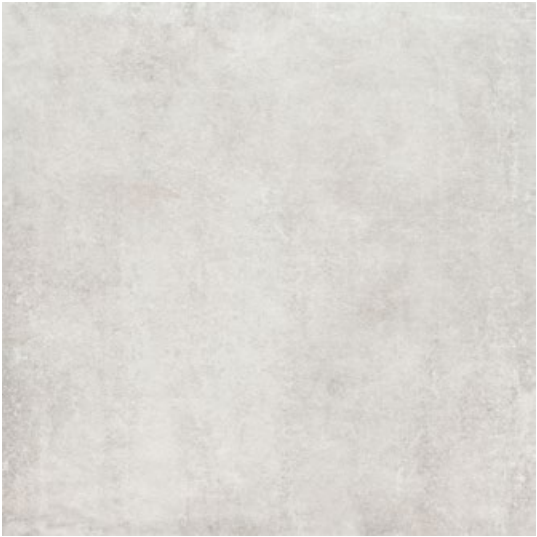
2
 7

2
 14

gris

R11 (A+B+C) | PEI ●●●●●

79,7×79,7



5903313301794

39,7×79,7



590331330197

2
 7

2
 14

- tile thickness

R11 - non-slip qualities

12 - number of graphic patterns

grafit

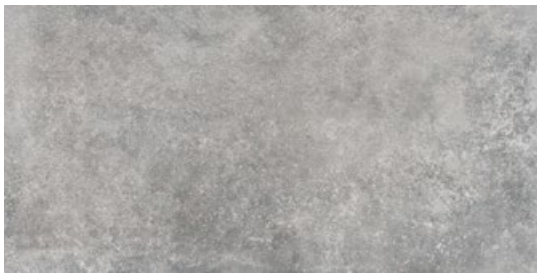
R11 (A+B+C) | PEI ●●●●○

79,7×79,7



5903313301817

39,7×79,7



5903313301992

2
 7

2
 14

antracyt

R11 (A+B+C) | PEI ●●●●○

79,7×79,7



5903313301831

39,7×79,7



5903313302012

2
 7

2
 14

Packaging

size [cm]	79,7×79,7×2	39,7×79,7×2
pieces in the box	1	2
m² in the box	0,64	0,63
box weight [kg]	30,5	30,7
m² on a pallet	25,6	26,46

Montego 2.0

dust

R11 (A+B+C) | PEI ●●●●○

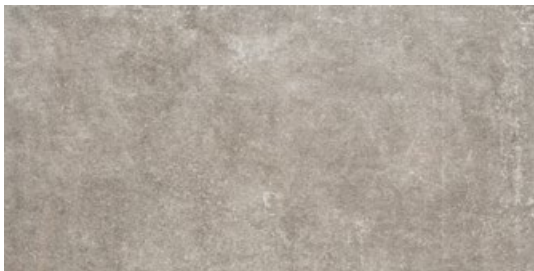
79,7×79,7



5903313301756

2
 7

39,7×79,7



5903313301930

2
 14

- tile thickness R11 - non-slip qualities 12 - number of graphic patterns

Packaging

size [cm]	79,7×79,7×2	39,7×79,7×2
pieces in the box	1	2
m² in the box	0,64	0,63
box weight [kg]	30,5	30,7
m² on a pallet	25,6	26,46

Ragaya 2.0

RG02 cream

R11 (A+B+C) | PEI ●●●●●

59,7×59,7



2
 12

5900423052189

RG03 beige

R11 (A+B+C) | PEI ●●●●●

59,7×59,7



2
 12

5900423052219

- tile thickness R11 - non-slip qualities 12 - number of graphic patterns

RG04 brown

R11 (A+B+C) | PEI ●●●●○

59,7×59,7



2
 12

5900423052240

RG05 dark brown

R11 (A+B+C) | PEI ●●●●○

59,7×59,7



2
 12


5900423052271

Packaging

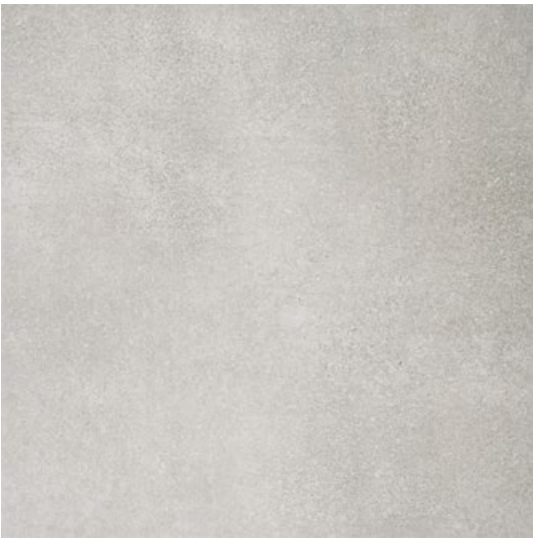
size [cm]	59,7×59,7×2
pieces in the box	2
m² in the box	0,71
box weight [kg]	32,3
m² on a pallet	22,72

Stratic 2.0

ST10 light grey

 R11 (A+B+C) | PEI ●●●●●


59,7×59,7



5900423052066

 2
 12


ST12 grey

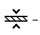

 R11 (A+B+C) | PEI ●●●●●

59,7×59,7




5900423052097

 2
 12


 - tile thickness  R11 - non-slip qualities  12 - number of graphic patterns



ST13 dark grey

 R11 (A+B+C) | PEI ●●●●○


59,7×59,7



5900423052127

 2
 12


ST14 anthracite

 R11 (A+B+C) | PEI ●●●○○

59,7×59,7



5900423052158


 2
 12


Packaging

size [cm]	59,7×59,7×2
pieces in the box	2
m² in the box	0,71
box weight [kg]	32,3
m² on a pallet	22,72

Tauro 2.0

bianco

 R11 (A+B+C) | PEI ●●●●○


39,7×119,7



 2
 12




5903313325295

ochra

 R11 (A+B+C) | PEI ●●●●○


39,7×119,7



 2
 12


5903313325370

sabbia

 R11 (A+B+C) | PEI ●●●●○


39,7×119,7



 2
 12

5903313325318

honey

 R11 (A+B+C) | PEI ●●●●○


39,7×119,7



 2
 12

5903313325356

brown

 R11 (A+B+C) | PEI ●●●●○

39,7×119,7



 2
 12


5903313325332

Packaging

size [cm]	39,7×119,7×2
pieces in the box	1
m² in the box	0,48
box weight [kg]	23,35
m² on a pallet	23,04

 - tile thickness  R11 - non-slip qualities  12 - number of graphic patterns

Testo 2.0

silver

R11 (A+B+C) | PEI ●●●●●

59,7×119,7



5903313325158

2
 9

greige

R11 (A+B+C) | PEI ●●●●●

59,7×119,7



5903313325196

2
 9

- tile thickness R11 - non-slip qualities 12 - number of graphic patterns

gris

R11 (A+B+C) | PEI ●●●●○

59,7×119,7



5903313325134

2
 9

grafit

R11 (A+B+C) | PEI ●●●●○

59,7×119,7



5903313325172

2
 9

Packaging

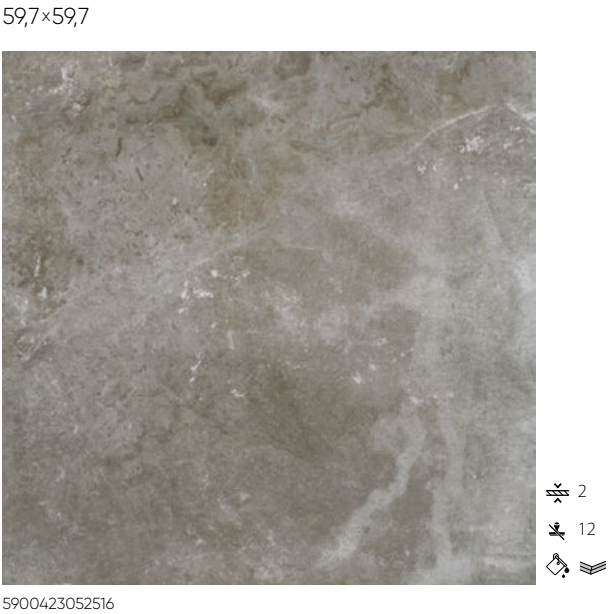
size [cm]	59,7×119,7×2
pieces in the box	1
m² in the box	0,71
box weight [kg]	33,4
m² on a pallet	21,3

Verness 2.0

VS04 brown R11 (A+B+C) | PEI ●●●●○



VS13 dark grey R11 (A+B+C) | PEI ●●●●○



VS12 grey R11 (A+B+C) | PEI ●●●●●



Packaging

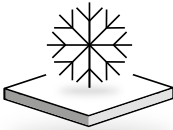
size [cm]	59,7×59,7×2
pieces in the box	2
m² in the box	0,71
box weight [kg]	32,3
m² on a pallet	22,72

2 - tile thickness R11 - non-slip qualities 12 - number of graphic patterns
matt surface rectified tile full colour body

CERRAD 2.0 properties



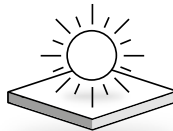
High load bearing capacity



Frost resistant



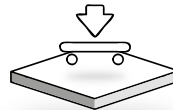
Non-slip qualities



UV resistant



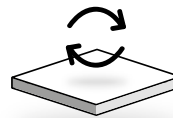
Resistant to acids, chemicals and salts



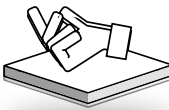
Flexural strength



Resistant to extreme weather changes



Reusable









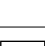





Easy to install and remove

TECHNICAL PROPERTIES AND STANDARDS

VALUES ACCORDING TO THE STANDARD
PN - EN 14411:2013-04 ANNEX G AND DECLARED – PORCELAIN TILE

DIMENSIONS AND SURFACE FLATNESS		NOMINAL DIMENSION N	
		7 cm ≤ N < 15	N ≥ 15 cm
tests according to PN-EN ISO 10545-2	length	± 0,9 mm	± 0,6% and max ± 2,0 mm
	width	± 0,9 mm	± 0,6% and max ± 2,0 mm
	thickness	± 0,5 mm	± 5% and max ± 0,5 mm
	deflection from the straight angle	± 0,75 mm	± 0,5% and max ± 2,0 mm
	surface flatness	± 0,75 mm	± 0,5% and max ± 2,0 mm

		PN – EN 14411:2013-04 ANNEX G and declared	
PHYSICAL PROPERTIES		REQUIREMENTS	MEAN VALUE ACHIEVED
	Water absorption, tests according to PN-EN ISO 10545-3	E ≤ 0,5%	0,05% – 0,10%
	Breaking force, tests according to PN-EN ISO 10545-4	for thickness < 7,5 mm – ≥ 700 N for thickness ≥ 7,5 mm – ≥ 1300 N	1300-1500 N 2000-2200 N
	Flexural strength, tests according to PN-EN ISO 10545-4	> 35 N/mm²	40-50 N/mm²
	Abrasion resistance, tests according to PN-EN ISO 10545-7	according to the manufacturer's declaration	cl. 3 – 5
	Frost resistance, tests according to PN-EN ISO 10545-12	required	resistant
	Chemical resistance, tests according to PN-EN ISO 10545-13, – to acids and bases of low concentration, – to acids and bases of high concentration, – to household agents/water pool salts	according to the manufacturer's classification – min. B	– LA – HA – A
	Non-slip qualities, tests according to DIN 51130 + complementary procedures	according to the manufacturer's declaration	smooth and rustic surface – R11
	Lead and cadmium release PN-EN ISO 10545-15	requirements of the Commission directive 2005/31/EC ≤ 0,2 mg/l for lead ≤ 0,02 mg/l for cadmium	Lead < 0,1 mg/dm³ Cadmium < 0,02 mg/dm³
	Natural radioactivity ITB 455/2010	no requirements	below regulatory safety limits
	Resistance to staining PN-EN ISO 10545-14	min. 3 cl. (GL)	cl. 5
	Cracking resistance, tests according to PN-EN ISO 10545-11	required	resistant
	Thermal shock resistance, test according to PN-EN ISO 10545-9	required	resistant

This catalogue does not constitute an offer as defined in the Civil Code provisions.
The actual appearance of tiles may differ from that presented in the pictures contained herein.
All rights reserved © CERRAD Ltd. 2021.



CERRAD Ltd.
Radomska 49 B Street
27-200 Starachowice
tel. +48 800 237 723
office@cerrad.com
www.cerrad.com

